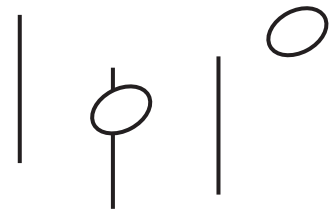
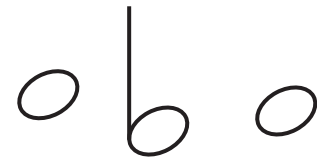
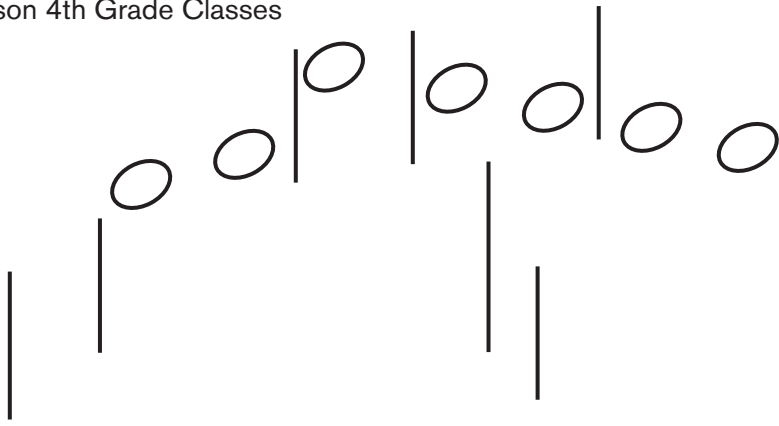


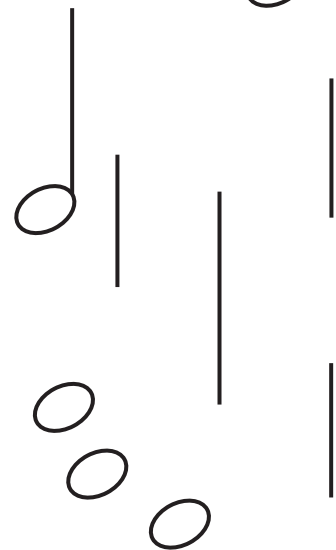
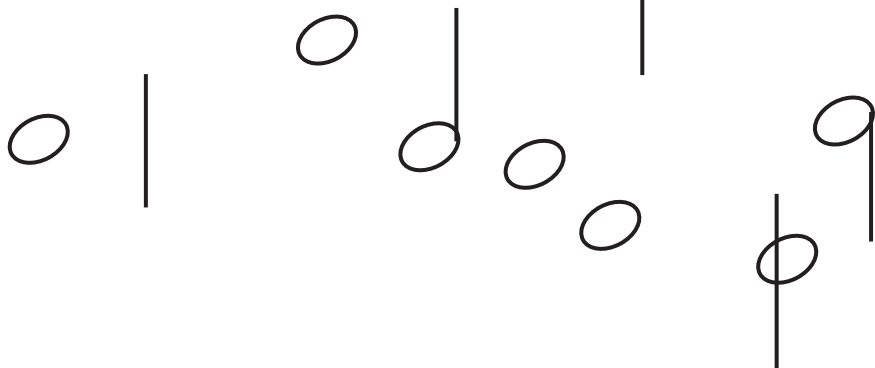
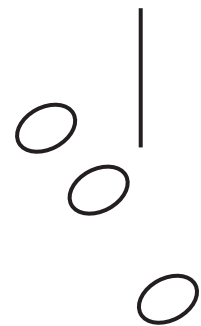
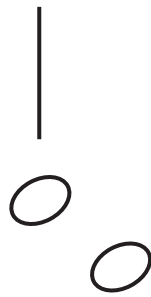
Composed and Performed by  
Emerson 4th Grade Classes

# Classroom Cantatas



Emerson  
Elementary School

Our Cantata  
From the Loving  
Animal Groups



**can ta ta  
singers**

# OUR CANTATA FROM THE LOVING ANIMAL GROUPS

written and performed by  
Ms. Timas' bilingual fourth grade,  
Ms Washington's music class,  
Ralph Waldo Emerson Elementary School, Roxbury, Massachusetts  
Winter/Spring 2010

HURT NO LIVING THING

TURTLE TIME

THE ANTS CRAWL

THE EEL

CARDINAL

*The chosen texts for the 4 songs come from an anthology selected by Jack Prelutsky and illustrated by Meilo So, The Beauty of the Beast: Poems from the Animal Kingdom (New York : Alfred A. Knopf : Distributed by Random House, c1997). The varied rhythms, vivid images and unusual combinations of words and phrases gave the students the opportunity to be playful with language as they continued to develop literacy skills in their second language. The children prepared to compose songs about animals themselves. They also learned "The Caterpillar," a song whose text by Christina Rossetti was set to music last year by the fourth grade at the Neighborhood House Charter School who studied with Boston composer, Andy Vores as part of Classroom Cantatas in that school. The Emerson 4<sup>th</sup> graders drew pictures inspired by the animals of their cantata and then, in their songs, re-created the unique and exquisite being of each creature.*

**Hurt no living thing**

Hurt no living thing:  
Ladybird, nor butterfly,  
Nor moth with dusty wing,  
Nor cricket chirping cheerily,  
Nor grasshopper so light of leap,  
Nor dancing gnat, nor beetle fat,  
Nor harmless worms that creep.

Christina Rossetti

# Turtle Time

Poem by Lilian Moore

Music by Simeao Silva, Melanie DePina, Henrique Montronde,  
John Awatey, Lidia Barros and Cleiton Pereira  
Ms Washington's Music Class, Ms Timas' 4th Grade  
Ralph Waldo Emerson Elementary School, Roxbury, MA  
with Sara Wyse-Wenger, Cantata Singers Teaching Artist

Slowly  $\text{♩} = 56$

Voice

Piano

My time is

*gva*

6 *Accel poco a poco*

slow time, old time, the un - hur - ried time of

6

11  $\text{♩} = 48$

tur-tles long a - go. My time is slow time,

11

## Turtle Time

*Accel poco a poco*

15

old time, the un-hur-ried, the un-hur-ried time of

19

$\text{♩} = 60$

tur-tles long a-go. My time is slow time, old time, the

24

quicker  $\text{♩} = 144$

un-hur-ried time of tur-tles long a-go. My time is suh-suh-suh slow time,

28

Slowly  $\text{♩} = 56$

my time is o-o-o-old time. Slow-ly, I make my way.

Turtle Time

32  $\text{♩} = 48$   $\text{♩} = 60$

Slow - ly, I make my way. Why hur-ry? Why hur-ry?

36 *Accel poco a poco*

There was Tur - tle Time be - fore there was peo-ple time

*Accel poco a poco*

39 *f*

peo - ple time.

*f*

# The Ants Crawl

Poem by Eleanor Schick

Music by Carlos Lopes, Gilson Pina, Daniel Pina Goncalves,  
Gabriela Pires, Tony Teixeira Aviz and Autino Vcente  
Ms Washington's Music Class, Ms Timas' 4th grade  
Ralph Waldo Emerson School, Roxbury, MA  
with Emmanuel Espiritu, Cantata Singers Teaching Artist

Voice *mf*

The Ants Crawl

Piano *mf*

4 *p*

o-ver my arm and back in-to the grass a-gain. In-to the grass a-

4 *p*

8 *f* *p*

gain. They mean me no harm. Mean

8 *f* *p*

The Ants Crawl

11 *f*

— me no harm. I am on - ly a moun tain to them. I am

15

on - ly a moun tain \_\_\_\_\_ to them. The

19 *mf*

Ants Crawl \_\_\_\_\_ o - ver my arm \_\_\_\_\_ and back \_\_\_\_\_ in - to \_\_\_\_\_ the grass \_\_\_\_\_ a - gain.

23 *p*

In - to the grass a - gain.



# The Eel

Poem by Robert S. Oliver

Music by Ineida Alves, Carla DaCruz,  
Jovany DePina, Acssana Galvao,  
Saulo Mendes, Juster Miranda and Alberto Pereira  
Ms Washington's Music Class, Ms Timas' Bilingual 4th Grade  
Ralph Waldo Emerson Elementary School, Roxbury, MA  
with Kera M Washington, Integrated Arts Specialist

**Lively!** ♩ = 120

Voice

Piano

The

5  
feel Of an eel Is slip - slip - slip - per - y, Sli-

5

8  
- my; He's sleek And he's black As a

8

The Eel

11

pan pan - ther At night!

11

11

16

He sli - sli - slides Through your fin - gers

16

16

21

Rap id ly, Sly - - - ly; A

21

21

26

flip Of his tail And he slips Out of sight!

26

26

# Cardinal

Poem by Barbara Juster Esbensen

Music by Francisca Barros, Erikson Gomes,  
Gilson DoSouto and Leila Rocha  
Ms Washington's Music Class, Ms Timas' Bilingual 4th Grade  
Ralph Waldo Emerson School, Roxbury, MA  
with Nathan Troup, Cantata Singers Teaching Artist

**Brightly**

Voice

Piano

5 *Fine*

Red as a shout Red as a shout

5 *Fine*

9

like a Chi-nese sig-na ture on the clean white snow

9

Cardinal

13

un-der the dark, dark, ju-ni-per tree in the park. In the whole ci-ty —

13

Detailed description: This system contains the first two measures of the piece. The vocal line (treble clef) starts with a quarter rest, followed by a series of eighth and quarter notes. The piano accompaniment (grand staff) features a steady eighth-note pattern in the right hand and a bass line with quarter notes in the left hand. The key signature is one sharp (F#) and the time signature is 4/4.

17

pale and dusted with snow only his wings — are a - blaze —

17

*Ped.* —————

Detailed description: This system contains measures 17 through 20. The vocal line continues with a melodic line that includes a long note with a slur. The piano accompaniment maintains the eighth-note pattern in the right hand and quarter notes in the left hand. A *Ped.* (pedal) marking is present at the end of the system.

21

— with pop - pies! pop - pies!

21

*D.C. al Fine*

*Ped.* —————

Detailed description: This system contains the final two measures of the piece. The vocal line ends with a quarter rest followed by two measures of eighth notes. The piano accompaniment concludes with a final chord in the right hand and a bass line. A *D.C. al Fine* (Da Capo al Fine) marking is present at the end of the system. A *Ped.* (pedal) marking is also present at the beginning of the system.